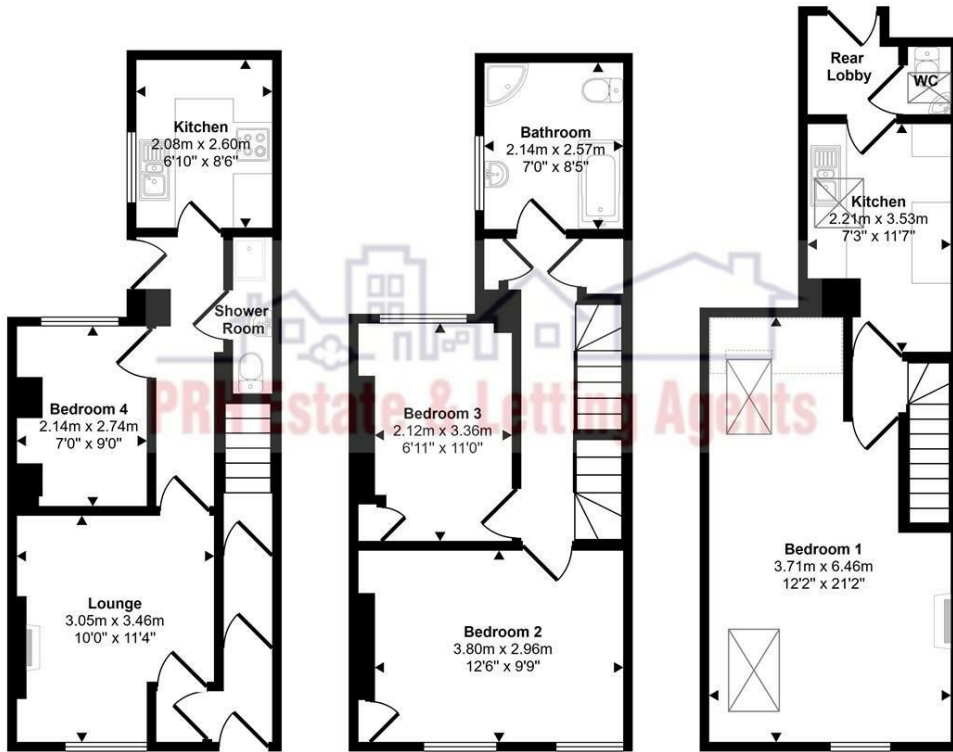


Approx Gross Internal Area  
103 sq m / 1111 sq ft



Ground Floor  
Approx 34 sq m / 367 sq ft

First Floor  
Approx 35 sq m / 377 sq ft

Second Floor  
Approx 34 sq m / 367 sq ft



Penzance

£250,000



14 Chyandour Cliff  
Penzance  
TR18 3LQ

£250,000

## KEY FEATURES

- Substantial Freehold Property
- Currently arranged as 1-bed ground floor flat & 2-bed upper maisonette
- Excellent potential to reinstate into a large single family home
- Enclosed rear garden
- Fantastic sea and coastal views towards St Michael's Mount
- EPC: Commissioned
- No onward chain

## DIRECTIONS

As you leave the town of Penzance, passing the train station on your right, Chyandour Cliff is on the left hand side of the road immediately after the Hotel Royal and is identified by our 'for Sale' board.

*A Versatile Freehold Property with Panoramic Sea Views towards St Michael's Mount*

*Situated in a prominent position, this deceptively spacious freehold property offers an incredible investment opportunity or the potential to create a substantial coastal family home. Currently configured as two independent, self-contained flats, the property provides superb flexibility for multi-generational living, home-with-an-income options, or straightforward buy-to-let investment. Alternatively, it could easily be converted back into its original grand layout as a single residence.*

*Accommodation Layout:*

*Ground Floor Flat (One Bedroom): A comfortable and level-access self-contained flat featuring a welcoming lounge, a practical kitchen, a shower room, and a double bedroom.*

*Maisonette / First & Second Floor Flat (Two Bedrooms): Spanning the upper two floors, this spacious apartment boasts a bright lounge positioned to take full advantage of the views, a separate kitchen, a bathroom with separate shower, and two well-proportioned bedrooms.*

*Outside & Views:*

*To the rear of the property is a private enclosed garden, offering a perfect blank canvas for landscaping, outdoor dining, or a peaceful retreat. Elevating this property's appeal is its frontline aspect looking directly across the railway line, offering unobstructed, sweeping views out across Mount's Bay towards the iconic St Michael's Mount.*

*SERVICES: Mains Electric, water and drainage - HEATING: Gas central heating - COUNCIL TAX: Each Flat is Band A - BROADBAND & MOBILE: Ofcom suggest U;trafast is available but none are connected and that mobile coverage is good on most networks.*

